

Dear Patient,

Below is a letter intended to provide Korlym[®] treatment information to co-managing Cardiology Specialists. It includes specific information that may be relevant to providers treating cardiovascular conditions. Please print or email this full letter and provide it to your Cardiologist at your next appointment.

If you have any questions, please reach out to the SPARK pharmacy:

Phone: 1-855-4KORLYM (1-855-456-7596)

A SPARK pharmacist is on call 24 hours a day, 7 days a week.

Important Safety Information

What Is Korlym[®] (mifepristone) 300 mg Tablets?

Korlym is a prescription medicine used to treat high blood sugar (hyperglycemia) caused by high cortisol levels in the blood (hypercortisolism) in adults with endogenous Cushing syndrome who have type 2 diabetes mellitus or glucose intolerance and who cannot have surgery or for whom surgery has failed. **Korlym** is not for people who have type 2 diabetes mellitus not caused by Cushing syndrome.

Most Important Information About Korlym

Korlym should never be taken by women who are pregnant or who might become pregnant. Taking **Korlym** during pregnancy will result in the loss of a pregnancy. A pregnancy test is required before starting **Korlym** or if treatment is interrupted for more than 14 days. Talk with your doctor about how to prevent pregnancy.

Complete warnings and other Important Safety Information are available in the full [Prescribing Information](#) and [Medication Guide](#).

Korlym[®] is a registered trademark of Corcept Therapeutics Incorporated.

©2023 Corcept Therapeutics Incorporated. All rights reserved. KOR-00881 NOV 2023

Dear Cardiovascular Specialist,

I was prescribed Korlym[®] 300 mg (mifepristone) Tablets by another Healthcare Provider to treat hyperglycemia secondary to hypercortisolism in adult patients with endogenous Cushing syndrome. The purpose of this letter is to provide information on how Korlym works and highlight several areas of interest for a cardiology specialist co-managing a patient prescribed Korlym.

Korlym is a potent antagonist of progesterone and carries a boxed warning for termination of pregnancy. Korlym is also a competitive antagonist of the glucocorticoid receptor (GR) which can reduce negative effects of excess cortisol. While Korlym can reduce cortisol activity, it does not lower cortisol levels and can lead to overstimulation of the Mineralocorticoid Receptor (MR).

For complete information on Korlym, please see full Prescribing Information, Including Boxed Warning, provided in this letter below.

Selected Areas of Interest for a Cardiovascular Specialist Co-managing a Patient Prescribed Korlym		
Topic	Drug Information	HCP Consideration
Drug Metabolism	Drugs metabolized by CYP3A such as simvastatin, lovastatin, and CYP3A substrates with a narrow therapeutic range are <i>contraindicated</i> with Korlym.	Do not start a patient on simvastatin or lovastatin in a patient taking Korlym (or switch to a different medication if you previously prescribed this for your patient). Contact the pharmacy for more information on other drugs that are contraindicated with Korlym.
Blood Pressure	While Korlym can lower blood pressure in some patients due to GR antagonism, MR stimulation can raise blood pressure in some patients. Patients may have an increase or decrease in blood pressure.	Monitor blood pressure and adjust medications as necessary.
		Use caution in prescribing potassium-wasting agents such as loop or thiazide diuretics.
Hypokalemia	The GR antagonism of Korlym can increase serum cortisol (even as it reduces cortisol activity), leading to overstimulation of the mineralocorticoid receptor (MR). Subsequently, this may cause or exacerbate pre-existing hypokalemia (which is a common manifestation of Cushing syndrome).	Use caution in prescribing potassium-wasting agents.
		In the pivotal trial for Korlym, MR overstimulation was managed with potassium supplementation and/or MR antagonists (eg-spirolactone).
Anti-coagulants	Many of these agents are strong CYP3A inhibitors and will need to be used at lower doses or switched from one agent to another.	Contact the pharmacy for recommendations in dose adjustment.
	Due to Progesterone antagonism, endometrial changes and vaginal bleeding may occur in some women.	Use caution in female patients who are prescribed anticoagulant therapy as this may potentiate vaginal bleeding.
QT Prolongation	Korlym prolongs the QTc interval in a dose related manner. There is little or no experience with high exposure, concomitant dosing with other QT-prolonging drugs, or potassium channel variants. To minimize risk, the lowest effective dose should always be used.	Contact the pharmacy to identify other drugs known to cause QT-prolongation for dosing recommendations.

Korlym is only available to patients through one specialty pharmacy. Before prescribing new medical therapies, or if you would like additional information about Korlym, please call the SPARK Pharmacy at (855) 456-7596.

HIGHLIGHTS OF PRESCRIBING INFORMATION

These highlights do not include all the information needed to use KORLYM® safely and effectively. See full prescribing information for KORLYM®.

KORLYM® (mifepristone) 300 mg Tablets

Initial U.S. Approval 2000

WARNING: TERMINATION OF PREGNANCY

See full prescribing information for complete boxed warning.

Mifepristone has potent antiprogesterone effects and will result in the termination of pregnancy. Pregnancy must therefore be excluded before the initiation of treatment with KORLYM, or if treatment is interrupted for more than 14 days in females of reproductive potential.

RECENT MAJOR CHANGES

Dosage and Administration (2.5) 11/2019

INDICATIONS AND USAGE

KORLYM (mifepristone) is a cortisol receptor blocker indicated to control hyperglycemia secondary to hypercortisolism in adult patients with endogenous Cushing's syndrome who have type 2 diabetes mellitus or glucose intolerance and have failed surgery or are not candidates for surgery (1).

- **Important Limitations of Use:** Do not use for the treatment of type 2 diabetes mellitus unrelated to endogenous Cushing's syndrome.

DOSAGE AND ADMINISTRATION

- Obtain a negative pregnancy test in females of reproductive potential prior to initiating treatment with KORLYM or if treatment is interrupted for more than 14 days (2.1).
- Administer once daily orally with a meal (2.2).
- The recommended starting dose is 300 mg once daily (2.2).
- Based on clinical response and tolerability, the dose may be increased in 300 mg increments to a maximum of 1200 mg once daily. Do not exceed 20 mg/kg per day (2.2).
- Renal impairment: do not exceed 600 mg once daily (2.3).
- Mild-to-moderate hepatic impairment: do not exceed 600 mg once daily. Do not use in severe hepatic impairment (2.4).
- Concomitant administration with strong CYP3A inhibitors: Do not exceed 900 mg once daily (2.5).

DOSAGE FORMS AND STRENGTHS

Tablets: 300 mg (3)

CONTRAINDICATIONS

- Pregnancy (4, 8.1)
- Patients taking drugs metabolized by CYP3A such as simvastatin, lovastatin, and CYP3A substrates with narrow therapeutic ranges (4)

KORLYM® (mifepristone) 300 mg Tablets

- Patients receiving systemic corticosteroids for lifesaving purposes (4)
- Women with a history of unexplained vaginal bleeding or endometrial hyperplasia with atypia or endometrial carcinoma (4)
- Patients with known hypersensitivity to mifepristone or to any of the product components (4)

WARNINGS AND PRECAUTIONS

- **Adrenal insufficiency:** Patients should be closely monitored for signs and symptoms of adrenal insufficiency (5.1).
- **Hypokalemia:** Hypokalemia should be corrected prior to treatment and monitored for during treatment (5.2).
- **Vaginal bleeding and endometrial changes:** Women may experience endometrial thickening or unexpected vaginal bleeding. Use with caution if patient also has a hemorrhagic disorder or is on anti-coagulant therapy (5.3).
- **QT interval prolongation:** Avoid use with QT interval-prolonging drugs, or in patients with potassium channel variants resulting in a long QT interval (5.4).
- **Use of Strong CYP3A Inhibitors:** Concomitant use can increase mifepristone plasma levels. Use only when necessary and limit mifepristone dose to 900 mg (5.6).

ADVERSE REACTIONS

Most common adverse reactions in Cushing's syndrome ($\geq 20\%$): nausea, fatigue, headache, decreased blood potassium, arthralgia, vomiting, peripheral edema, hypertension, dizziness, decreased appetite, endometrial hypertrophy (6).

To report suspected adverse reactions, contact Corcept Therapeutics at 1-855-844-3270 or FDA at 1-800-FDA-1088 or www.fda.gov/medwatch.

DRUG INTERACTIONS

- Drugs metabolized by CYP3A: Administer drugs that are metabolized by CYP3A at the lowest dose when used with KORLYM (7.1).
- CYP3A inhibitors: Caution should be used when KORLYM is used with strong CYP3A inhibitors. Limit mifepristone dose to 900 mg per day when used with strong CYP3A inhibitors (7.2).
- CYP3A inducers: Do not use KORLYM with CYP3A inducers (7.3).
- Drugs metabolized by CYP2C8/2C9: Use the lowest dose of CYP2C8/2C9 substrates when used with KORLYM (7.4).
- Drugs metabolized by CYP2B6: Use of KORLYM should be done with caution with bupropion and efavirenz (7.5).
- Hormonal contraceptives: Do not use with KORLYM (7.6).

See 17 for PATIENT COUNSELING INFORMATION and Medication Guide.

Revised: 11/2019

FULL PRESCRIBING INFORMATION: CONTENTS*

WARNING: TERMINATION OF PREGNANCY

1 INDICATIONS AND USAGE

2 DOSAGE AND ADMINISTRATION

- 2.1 Testing Prior to and During KORLYM Administration
- 2.2 Adult Dosage
- 2.3 Dosing in Renal Impairment
- 2.4 Dosing in Hepatic Impairment
- 2.5 Concomitant Administration with CYP3A Inhibitors

3 DOSAGE FORMS AND STRENGTHS

4 CONTRAINDICATIONS

5 WARNINGS AND PRECAUTIONS

- 5.1 Adrenal Insufficiency
- 5.2 Hypokalemia
- 5.3 Vaginal Bleeding and Endometrial Changes
- 5.4 QT Interval Prolongation
- 5.5 Exacerbation/Deterioration of Conditions Treated with Corticosteroids
- 5.6 Use of Strong CYP3A Inhibitors
- 5.7 *Pneumocystis jirovecii* Infection
- 5.8 Potential Effects of Hypercortisolemia

6 ADVERSE REACTIONS

- 6.1 Clinical Trials Experience
- 6.2 Postmarketing Experience

7 DRUG INTERACTIONS

- 7.1 Drugs Metabolized by CYP3A
- 7.2 CYP3A Inhibitors
- 7.3 CYP3A Inducers

7.4 Drugs Metabolized by CYP2C8/2C9

7.5 Drugs Metabolized by CYP2B6

7.6 Use of Hormonal Contraceptives

8 USE IN SPECIFIC POPULATIONS

- 8.1 Pregnancy
- 8.2 Lactation
- 8.3 Females and Males of Reproductive Potential
- 8.4 Pediatric Use
- 8.5 Geriatric Use
- 8.6 Renal Impairment
- 8.7 Hepatic Impairment

10 OVERDOSAGE

11 DESCRIPTION

12 CLINICAL PHARMACOLOGY

- 12.1 Mechanism of Action
- 12.2 Pharmacodynamics
- 12.3 Pharmacokinetics

13 NONCLINICAL TOXICOLOGY

- 13.1 Carcinogenesis, Mutagenesis, Impairment of Fertility

14 CLINICAL STUDIES

- 14.1 Cushing's Syndrome

16 HOW SUPPLIED/STORAGE AND HANDLING

17 PATIENT COUNSELING INFORMATION

- 17.1 Importance of Preventing Pregnancy

*Sections or subsections omitted from the full prescribing information are not listed.

FULL PRESCRIBING INFORMATION

WARNING: TERMINATION OF PREGNANCY

Mifepristone is a potent antagonist of progesterone and cortisol via the progesterone and glucocorticoid (GR-II) receptors, respectively. The antiprogesterone effects will result in the termination of pregnancy. Pregnancy must therefore be excluded before the initiation of treatment with KORLYM and prevented during treatment and for one month after stopping treatment by the use of a non-hormonal medically acceptable method of contraception unless the patient has had a surgical sterilization, in which case no additional contraception is needed. Pregnancy must also be excluded if treatment is interrupted for more than 14 days in females of reproductive potential.

1 INDICATIONS AND USAGE

KORLYM (mifepristone) is a cortisol receptor blocker indicated to control hyperglycemia secondary to hypercortisolism in adult patients with endogenous Cushing's syndrome who have type 2 diabetes mellitus or glucose intolerance and have failed surgery or are not candidates for surgery.

LIMITATIONS OF USE:

- KORLYM should not be used in the treatment of patients with type 2 diabetes unless it is secondary to Cushing's syndrome.

2 DOSAGE AND ADMINISTRATION**2.1 Testing Prior to and During KORLYM Administration**

Obtain a negative pregnancy test in females of reproductive potential prior to initiating treatment with KORLYM or if treatment is interrupted for more than 14 days [See Contraindications (4), Warnings and Precautions (5.2), Use in Specific Populations (8.1, 8.3)].

2.2 Adult Dosage

The recommended starting dose is 300 mg orally once daily. KORLYM must be given as a single daily dose. KORLYM should always be taken with a meal. Patients should swallow the tablet whole. Do not split, crush, or chew tablets.

Dosing and titration

The daily dose of KORLYM may be increased in 300 mg increments. The dose of KORLYM may be increased to a maximum of 1200 mg once daily but should not exceed 20 mg/kg per day. Increases in dose should not occur more frequently than once every 2-4 weeks. Decisions about dose increases should be based on a clinical assessment of tolerability and degree of improvement in Cushing's syndrome manifestations. Changes in glucose control, anti-diabetic medication requirements, insulin levels, and psychiatric symptoms may provide an early assessment of response (within 6 weeks) and may help guide early dose titration. Improvements in cushingoid appearance, acne, hirsutism, striae, and body weight occur over a longer period of time and, along with measures of glucose control, may be used to determine dose changes beyond the first 2 months of therapy. Careful and gradual titration of KORLYM accompanied by monitoring for recognized adverse reactions [See Warnings and Precautions (5.1) and (5.2)] may reduce the risk of severe adverse reactions. Dose reduction or even dose discontinuation may be needed in some clinical situations. If KORLYM treatment is interrupted, it should be reinitiated at the lowest dose (300 mg). If treatment was interrupted because of adverse reactions, the titration should aim for a dose lower than the one that resulted in treatment interruption.

2.3 Dosing in Renal Impairment

No change in initial dose of KORLYM is required in renal impairment. The maximum dose should be limited to 600 mg. [See Renal Impairment (8.6) and Clinical Pharmacology (12.3)]

2.4 Dosing in Hepatic Impairment

No change in the initial dose of KORLYM is required in mild to moderate hepatic impairment. The maximum dose should be limited to 600 mg. KORLYM should not be used in severe hepatic impairment. [See Hepatic Impairment (8.7) and Clinical Pharmacology (12.3)]

2.5 Concomitant Administration with CYP3A Inhibitors

Ketoconazole and other strong inhibitors of CYP3A, such as itraconazole, nefazodone, ritonavir, nelfinavir, indinavir, atazanavir, amprenavir and fosamprenavir, clarithromycin, conivaptan, lopinavir/ritonavir, posaconazole, saquinavir, telithromycin, or voriconazole may increase exposure to mifepristone. KORLYM should be used in combination with strong CYP3A inhibitors only when necessary. [See Warnings and Precautions (5.6), Drug Interactions (7.2)]

Administration of KORLYM to patients already being treated with strong CYP3A inhibitors:

- Start at a dose of 300 mg. If clinically indicated, titrate to a maximum of 900 mg.

Administration of strong CYP3A inhibitors to patients already being treated with KORLYM:

- Adjust the dose of KORLYM according to Table 1.

Table 1. Dose adjustment of KORLYM when strong CYP3A inhibitor is added

Current dose of KORLYM	Adjustment to dose of KORLYM if adding a strong CYP3A inhibitor
300 mg	No change
600 mg	Reduce dose to 300 mg. If clinically indicated, titrate to a maximum of 600 mg
900 mg	Reduce dose to 600 mg. If clinically indicated, titrate to a maximum of 900 mg
1200 mg	Reduce dose to 900 mg

3 DOSAGE FORMS AND STRENGTHS

Tablets: 300 mg

Oval shaped, light yellow to yellow tablets debossed with "Corcept" on one side and "300" on the other side. The tablets are not scored.

4 CONTRAINDICATIONS

KORLYM is contraindicated in:

- Pregnancy [See Dosage and Administration (2.1), Use in Specific Populations (8.1, 8.3)]
- Patients taking drugs metabolized by CYP3A such as simvastatin, lovastatin, and CYP3A substrates with narrow therapeutic ranges, such as cyclosporine, dihydroergotamine, ergotamine, fentanyl, pimozide, quinidine, sirolimus, and tacrolimus, due to an increased risk of adverse events. [See Drug Interactions (7.1) and Clinical Pharmacology (12.3)]
- Patients receiving systemic corticosteroids for lifesaving purposes (e.g., immunosuppression after organ transplantation) because KORLYM antagonizes the effect of glucocorticoids.
- Women with a history of unexplained vaginal bleeding or with endometrial hyperplasia with atypia or endometrial carcinoma.
- Patients with known hypersensitivity to mifepristone or to any of the product components.

5 WARNINGS AND PRECAUTIONS**5.1 Adrenal Insufficiency**

Patients receiving mifepristone may experience adrenal insufficiency. Because serum cortisol levels remain elevated and may even increase during treatment with KORLYM, serum cortisol levels do not provide an accurate assessment of hypoadrenalism in patients receiving KORLYM. Patients should be closely monitored for signs and symptoms of adrenal insufficiency, including weakness, nausea, increased fatigue, hypotension, and hypoglycemia. If adrenal insufficiency is suspected, discontinue treatment with KORLYM immediately and administer glucocorticoids without delay. High doses of supplemental glucocorticoids may be needed to overcome the glucocorticoid receptor blockade produced by mifepristone. Factors considered in deciding on the duration of glucocorticoid treatment should include the long half-life of mifepristone (85 hours). Treatment with KORLYM at a lower dose can be resumed after resolution of adrenal insufficiency. Patients should also be evaluated for precipitating causes of hypoadrenalism (infection, trauma, etc.).

5.2 Hypokalemia

In a study of patients with Cushing's syndrome, hypokalemia was observed in 44% of subjects during treatment with KORLYM. Hypokalemia should be corrected prior to initiating KORLYM. During KORLYM administration, serum potassium should be measured 1 to 2 weeks after starting or increasing the dose of KORLYM and periodically thereafter. Hypokalemia can occur at any time during KORLYM treatment. Mifepristone-induced hypokalemia should be treated with intravenous or oral potassium supplementation based on event severity. If hypokalemia persists in spite of potassium supplementation, consider adding mineralocorticoid antagonists.

5.3 Vaginal Bleeding and Endometrial Changes

Being an antagonist of the progesterone receptor, mifepristone promotes unopposed endometrial proliferation that may result in endometrium thickening, cystic dilatation of endometrial glands, and vaginal bleeding. KORLYM should be used with caution in women who have hemorrhagic disorders or are receiving concurrent anticoagulant therapy. Women who experience vaginal bleeding during KORLYM treatment should be referred to a gynecologist for further evaluation.

5.4 QT Interval Prolongation

Mifepristone and its metabolites block IKr. KORLYM prolongs the QTc interval in a dose-related manner. There is little or no experience with high exposure, concomitant dosing with other QT-prolonging drugs, or potassium channel variants resulting in a long QT interval. [See Warnings & Precautions (5.6)] To minimize risk, the lowest effective dose should always be used.

5.5 Exacerbation/Deterioration of Conditions Treated with Corticosteroids

Use of KORLYM in patients who receive corticosteroids for other conditions (e.g., autoimmune disorders) may lead to exacerbation or deterioration of such conditions, as KORLYM antagonizes the desired effects of glucocorticoid in these clinical settings. For medical conditions in which chronic corticosteroid therapy is lifesaving (e.g., immunosuppression in organ transplantation), KORLYM is contraindicated. [See Contraindications (4.3)]

5.6 Use of Strong CYP3A Inhibitors

KORLYM should be used with caution in patients taking ketoconazole and other strong inhibitors of CYP3A, such as itraconazole, nefazodone, ritonavir, nelfinavir, indinavir, atazanavir, amprenavir, fosamprenavir, clarithromycin, conivaptan, lopinavir/ritonavir, posaconazole, saquinavir, telithromycin, or voriconazole, as these could increase the concentration of mifepristone in the blood. The benefit of concomitant use of these agents should be carefully weighed against the potential risks. KORLYM should be used in combination with strong CYP3A inhibitors only when necessary, and in such cases the dose should be limited to 900 mg per day. [See Warnings & Precautions (5.4), Drug Interactions (7.2), and Clinical Pharmacology (12.3)]

5.7 Pneumocystis jiroveci Infection

Patients with endogenous Cushing's syndrome are at risk for opportunistic infections such as *Pneumocystis jiroveci* pneumonia during KORLYM treatment. Patients may present with respiratory distress shortly after initiation of KORLYM. Appropriate diagnostic tests should be undertaken and treatment for *Pneumocystis jiroveci* should be considered.

5.8 Potential Effects of Hypercortisolemia

KORLYM does not reduce serum cortisol levels. Elevated cortisol levels may activate mineralocorticoid receptors which are also expressed in cardiac tissues. Caution should be used in patients with underlying heart conditions including heart failure and coronary vascular disease.

6 ADVERSE REACTIONS

6.1 Clinical Trials Experience

Because clinical trials are conducted under widely varying conditions, the adverse reaction rates observed cannot be directly compared to rates in other clinical trials and may not reflect the rates observed in clinical practice.

Safety data on the use of KORLYM are available from 50 patients with Cushing's syndrome enrolled in an uncontrolled, open-label, multi-center trial (Study 400). Forty-three patients had Cushing's disease and all except one had previously undergone pituitary surgery. Four patients had ectopic ACTH secretion, and three had adrenal carcinoma. Patients were treated for up to 24 weeks. A dose of 300 mg per day was administered for the initial 14 days; thereafter, the dose could be escalated in increments of 300 mg per day based on assessments of tolerability and clinical response. Doses were escalated up to 900 mg per day for patients <60 kg, or 1200 mg per day for patients >60 kg.

The most frequently reported adverse reactions (reported in ≥20% of patients, regardless of relationship to KORLYM) were nausea, fatigue, headache, decreased blood potassium, arthralgia, vomiting, peripheral edema, hypertension, dizziness, decreased appetite, and endometrial hypertrophy. Drug-related adverse events resulted in dose interruption or reduction in study drug in 40% of patients.

The adverse reactions that occurred in ≥10% of the Cushing's syndrome patients receiving KORLYM, regardless of relationship to KORLYM, are shown in Table 2.

Table 2. Treatment Emergent Adverse Events Occurring in ≥10% of Cushing's Syndrome Patients Receiving KORLYM

Body System/Adverse Reaction	Percent (%) of Patients Reporting Event (n = 50)
Gastrointestinal disorders	
Nausea	48
Vomiting	26
Dry mouth	18
Diarrhea	12
Constipation	10
General disorders and administration/site conditions	
Fatigue	48
Edema peripheral	26
Pain	14
Nervous system disorders	
Headache	44
Dizziness	22
Somnolence	10
Musculoskeletal and connective tissue disorders	
Arthralgia	30
Back pain	16
Myalgia	14
Pain in extremity	12
Investigations	
Blood potassium decreased	34
Thyroid function test abnormal	18
Infections and infestations	
Sinusitis	14
Nasopharyngitis	12
Metabolism and nutrition disorders	
Decreased appetite	20
Anorexia	10
Vascular disorders	
Hypertension	24
Reproductive system and breast disorders	
Endometrial hypertrophy	38*
Respiratory, thoracic, and mediastinal disorders	
Dyspnea	16
Psychiatric disorders	
Anxiety	10

*The denominator was 26 females who had baseline and end-of-trial transvaginal ultrasound

Laboratory Tests

Reductions in high density lipoprotein-cholesterol (HDL-C) levels have been observed following treatment with KORLYM. In study subjects that experienced declines in HDL-C, levels returned to baseline following discontinuation of drug. The clinical significance of the treatment-related reduction in HDL-C levels in patients with Cushing's syndrome is not known.

In a study of patients with Cushing's syndrome, hypokalemia was observed in 44% of subjects during treatment with KORLYM. In these cases, hypokalemia responded to treatment with potassium supplementation and/or mineralocorticoid antagonist therapy (e.g., spironolactone or eplerenone). Hypokalemia should be corrected prior to initiating KORLYM. [See *Warnings and Precautions (5.2)*]

Elevations of thyroid-stimulating hormone (TSH) were seen in subjects treated with KORLYM. Of the 42 subjects with detectable TSH at baseline, eight (19%) had increases in TSH above the normal range, while remaining asymptomatic. The TSH levels returned to normal in most patients without intervention when KORLYM was discontinued at the end of the study.

Vaginal Bleeding and Endometrial Changes

In Study 400, the thickness of the endometrium increased from a mean of 6.14 mm at baseline (n=23) to 15.7 mm at end-of-trial (n=18) in premenopausal women; in postmenopausal women the increase was from 2.75 mm (n=6) to 7.35 mm (n=8). Endometrial thickness above the upper limit of normal was reported in 10/26 females who had baseline and end-of-trial transvaginal ultrasound (38%). The endometrial thickness returned to the normal range in 3 out of 10 patients 6 weeks after treatment cessation at the end of the study. Vaginal bleeding occurred in 5 out of 35 females (14%). Two of five subjects with vaginal bleeding had normal endometrial thickness. Endometrial biopsies were performed in six patients; five of these patients had endometrial thickening. No endometrial carcinoma was detected in the sampled cases.

Additional Data from Clinical Trials

The following are adverse events that were reported in Study 400 at frequencies of ≥ 5% to 10%, and may be related to KORLYM's mechanism of action:

Gastrointestinal disorders: gastroesophageal reflux, abdominal pain

General disorders and administration site conditions: asthenia, malaise, edema, pitting edema, thirst

Investigations: blood triglycerides increased

Metabolism and nutrition disorders: hypoglycemia

Musculoskeletal and connective tissue disorders: muscular weakness, flank pain, musculoskeletal chest pain

Psychiatric disorders: insomnia

Reproductive system and breast disorders: vaginal hemorrhage, metrorrhagia [See *Warnings and Precautions (5.3)*]

Adrenal Insufficiency

Adrenal insufficiency was reported in two subjects (4%) in Study 400. The most typical symptoms of adrenal insufficiency were nausea and decreased appetite. No hypotension or hypoglycemia was reported during the events. Adrenal insufficiency resolved in both cases with KORLYM interruption and/or dexamethasone administration.

Rash

Generalized, maculo-papular rash was reported in 2 subjects (4%) in Study 400. Two additional subjects developed pruritus (4%). None resulted in discontinuation of KORLYM, and all the events resolved by the end of the study.

6.2 Postmarketing Experience

The following adverse reaction has been identified during post approval use of KORLYM.

Because these reactions are reported voluntarily from a population of uncertain size, it is not always possible to reliably estimate their frequency or establish a causal relationship to drug exposure.

- Angioedema

7 DRUG INTERACTIONS

Based on the long terminal half-life of mifepristone after reaching steady state, at least 2 weeks should elapse after cessation of KORLYM before initiating or increasing the dose of any interacting concomitant medication.

7.1 Drugs Metabolized by CYP3A

Because KORLYM is an inhibitor of CYP3A, concurrent use of KORLYM with a drug whose metabolism is largely or solely mediated by CYP3A is likely to result in increased plasma concentrations of the drug. Discontinuation or dose reduction of such medications may be necessary with KORLYM co-administration.

KORLYM increased the exposure to simvastatin and simvastatin acid significantly in healthy subjects. Concomitant use of simvastatin or lovastatin is contraindicated because of the increased risk of myopathy and rhabdomyolysis. [See *Contraindications (4.2)*, *Clinical Pharmacology (12.3)*]

The exposure of other substrates of CYP3A with narrow therapeutic ranges, such as cyclosporine, dihydroergotamine, ergotamine, fentanyl, pimozide, quinidine, sirolimus, and tacrolimus, may be increased by concomitant administration with KORLYM. Therefore, the concomitant use of such CYP3A substrates with KORLYM is contraindicated. [See *Contraindications (4.2)*]

Other drugs with similar high first pass metabolism in which CYP3A is the primary route of metabolism should be used with extreme caution if co-administered with KORLYM. The lowest possible dose and/or a decreased frequency of dosing must be used with therapeutic drug monitoring when possible. Use of alternative drugs without these metabolic characteristics is advised when possible with concomitant KORLYM.

If drugs that undergo low first pass metabolism by CYP3A or drugs in which CYP3A is not the major metabolic route are co-administered with KORLYM, use the lowest dose of concomitant medication necessary, with appropriate monitoring and follow-up. [See *Clinical Pharmacology (12.3)*]

7.2 CYP3A Inhibitors

Medications that inhibit CYP3A could increase plasma mifepristone concentrations and dose reduction of KORLYM may be required.

Ketoconazole and other strong inhibitors of CYP3A, such as itraconazole, nefazodone, ritonavir, nelfinavir, indinavir, atazanavir, amprenavir and fosamprenavir, clarithromycin, conivaptan, lopinavir/ritonavir, posaconazole, saquinavir, telithromycin, or voriconazole may increase exposure to mifepristone. Caution should be used when strong CYP3A inhibitors are prescribed in combination with KORLYM. The benefit of concomitant use of these agents should be carefully weighed against the potential risks. The dose of KORLYM should be limited to 900 mg, and strong inhibitors of CYP3A should be used only when necessary. [See *Dosage and Administration (2.4)*, *Warnings & Precautions (5.6)*, and *Clinical Pharmacology (12.3)*]

7.3 CYP3A Inducers

No medications that induce CYP3A have been studied when co-administered with KORLYM.

Avoid co-administration of KORLYM and CYP3A inducers such as rifampin, rifabutin, rifapentin, phenobarbital, phenytoin, carbamazepine, and St. John's wort.

7.4 Drugs Metabolized by CYP2C8/2C9

Because KORLYM is an inhibitor of CYP2C8/2C9, concurrent use of KORLYM with a drug whose metabolism is largely or solely mediated by CYP2C8/2C9 is likely to result in increased plasma concentrations of the drug.

KORLYM significantly increased exposure of fluvastatin, a typical CYP2C8/2C9 substrate, in healthy subjects. When given concomitantly with KORLYM, drugs that are substrates of CYP2C8/2C9 (including non-steroidal anti-inflammatory drugs, warfarin, and repaglinide) should be used at the smallest recommended doses, and patients should be closely monitored for adverse effects. [See *Clinical Pharmacology (12.3)*]

7.5 Drugs Metabolized by CYP2B6

Mifepristone is an inhibitor of CYP2B6 and may cause significant increases in exposure of drugs that are metabolized by CYP2B6 such as bupropion and efavirenz. Since no study

has been conducted to evaluate the effect of mifepristone on substrates of CYP2B6, the concomitant use of bupropion and efavirenz should be undertaken with caution. [See *Clinical Pharmacology* (12.3)]

7.6 Use of Hormonal Contraceptives

Mifepristone is a progesterone-receptor antagonist and will interfere with the effectiveness of hormonal contraceptives. Therefore, non-hormonal contraceptive methods should be used. [See *Use In Specific Populations* (8.3)]

8 USE IN SPECIFIC POPULATIONS

8.1 Pregnancy

Risk Summary

KORLYM is contraindicated in pregnancy because the use of KORLYM results in pregnancy loss. There are no data that assess the risk of birth defects in women exposed to KORLYM during pregnancy. Available data limited to exposure following a single dose of mifepristone during pregnancy showed a higher rate of major birth defects compared to the general population comparator (See *Data*). Mifepristone administered to pregnant mice, rats, and rabbits during organogenesis caused pregnancy loss in all species at clinically relevant doses based on body surface area comparisons (See *Data*). The inhibition of both endogenous and exogenous progesterone by mifepristone at the progesterone receptor results in pregnancy loss. If KORLYM is used during pregnancy or if the patient becomes pregnant while taking this drug, the patient should be apprised of the potential hazard to a fetus. [See *Contraindications* (4)] The estimated risk of fetal loss is elevated in patients with active Cushing's syndrome (24-30%), and the risk of major birth defects is unknown. In the U.S. general population, the estimated background risks of major birth defects and miscarriage in clinically recognized pregnancies are 2-4% and 15-20%, respectively.

Data

Human Data

There are no data on long term exposure to mifepristone in pregnancy. Available data are limited to exposure to a single dose of mifepristone for pregnancy termination. In a prospective study in France of 46 pregnancies exposed to a single dose of mifepristone alone and 59 pregnancies exposed to a single dose of mifepristone and misoprostol, the overall major birth defect rate (4%) was greater than the general population background rate of 2 to 3% (2 birth defects in each group). There was no pattern of birth defects identified.

Animal Data

Reproductive studies were performed in mice, rats and rabbits at doses of 0.25 to 4.0 mg/kg (less than human exposure at the maximum clinical dose, based on body surface area). Because of the anti-progestational activity of mifepristone, fetal losses were much higher than in control animals. Skull deformities were detected in rabbit studies at less than human exposure, although mifepristone did not cause any adverse developmental effects in rats or mice during organogenesis. These deformities were most likely due to the mechanical effects of uterine contractions resulting from antagonism of the progesterone receptor.

8.2 Lactation

Risk Summary

Mifepristone is present in human milk, however, there are no data on the amount of mifepristone in human milk, the effects on the breastfed infant, or the effects on milk production during long term use of mifepristone (see *Data*). The developmental and health benefits of breastfeeding should be considered along with the mother's clinical need for KORLYM and any potential adverse effects on the breastfed child from KORLYM or from the underlying maternal condition.

Clinical Considerations

To minimize exposure to a breastfed infant, women who discontinue or interrupt KORLYM treatment may consider pumping and discarding milk during treatment and for 18-21 days (5-6 half-lives) after the last dose, before breastfeeding.

Data

Available published data based on intake of a single dose of 600 mg of mifepristone in 10 breastfeeding women who were 6-12 months postpartum showed a small amount in breast milk (the estimated relative infant dose was 0.5%). The half-life of mifepristone is longer with repeat dosing compared to a single dose; therefore, there may be greater exposure with long term use.

8.3 Females and Males of Reproductive Potential

Pregnancy Testing

Due to its anti-progestational activity, KORLYM causes pregnancy loss. Perform pregnancy testing before the initiation of treatment with KORLYM or if treatment is interrupted for more than 14 days in females of reproductive potential.

Contraception

Recommend non-hormonal contraception for the duration of treatment and for one month after stopping treatment. KORLYM interferes with the effectiveness of hormonal contraceptives. [See *Drug Interactions* (7.6)]

8.4 Pediatric Use

Safety and effectiveness of KORLYM in pediatric patients have not been established.

8.5 Geriatric Use

Clinical studies with KORLYM did not include sufficient numbers of patients aged 65 and over to determine whether they respond differently than younger people.

8.6 Renal Impairment

The maximum dose should not exceed 600 mg per day in renally impaired patients. [See *Clinical Pharmacology* (12.3)]

8.7 Hepatic Impairment

In patients with mild to moderate hepatic impairment, the maximum dose should not exceed

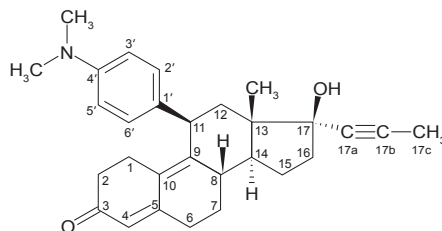
600 mg per day. The pharmacokinetics of mifepristone in patients with severe hepatic impairment has not been studied, and KORLYM should not be used in these patients. [See *Clinical Pharmacology* (12.3)]

10 OVERDOSAGE

There is no experience with overdose of KORLYM.

11 DESCRIPTION

KORLYM (mifepristone) is a cortisol receptor blocker for oral administration. The chemical name of mifepristone is 11β-(4-dimethylaminophenyl)-17β-hydroxy-17α-(1-propynyl)-estra-4,9-dien-3-one. The chemical formula is C₂₉H₃₅NO₂; the molecular weight is 429.60, and the structural formula is:



Mifepristone demonstrates a pH-related solubility profile. The greatest solubility is achieved in acidic media (~ 25 mg/mL at pH 1.5) and solubility declines rapidly as the pH is increased. At pH values above 2.5 the solubility of mifepristone is less than 1 mg/mL.

Each KORLYM tablet for oral use contains 300 mg of mifepristone. The inactive ingredients of KORLYM tablets are silicified microcrystalline cellulose, sodium starch glycolate, hydroxypropylcellulose, sodium lauryl sulfate, magnesium stearate, hypromellose, titanium dioxide, triacetin, D&C yellow 10 aluminum lake, polysorbate 80, and FD&C yellow 6 aluminum lake.

12 CLINICAL PHARMACOLOGY

12.1 Mechanism of Action

Mifepristone is a selective antagonist of the progesterone receptor at low doses and blocks the glucocorticoid receptor (GR-II) at higher doses. Mifepristone has high affinity for the GR-II receptor but little affinity for the GR-I (MR, mineralocorticoid) receptor. In addition, mifepristone appears to have little or no affinity for estrogen, muscarinic, histaminic, or monoamine receptors.

12.2 Pharmacodynamics

Because mifepristone acts at the receptor level to block the effects of cortisol, its antagonistic actions affect the hypothalamic-pituitary-adrenal (HPA) axis in such a way as to further increase circulating cortisol levels while, at the same time, blocking their effects.

Mifepristone and the three active metabolites have greater affinity for the glucocorticoid receptor [100% (mifepristone), 61% (metabolite 1), 48% (metabolite 2), and 45% (metabolite 3)] than either dexamethasone (23%) or cortisol (9%).

12.3 Pharmacokinetics

Absorption

Following oral administration, time to peak plasma concentrations of mifepristone occurred between 1 and 2 hours following single dose, and between 1 and 4 hours following multiple doses of 600 mg of KORLYM in healthy volunteers. Mean plasma concentrations of three active metabolites of mifepristone peak between 2 and 8 hours after multiple doses of 600 mg/day, and the combined concentrations of the metabolites exceed that of the parent mifepristone. Exposure to mifepristone is substantially less than dose proportional. Time to steady state is within 2 weeks, and the mean (SD) half-life of the parent mifepristone was 85 (61) hours following multiple doses of 600 mg/day of KORLYM.

Studies evaluating the effects of food on the pharmacokinetics of KORLYM demonstrate a significant increase in plasma levels of mifepristone when dosed with food. To achieve consistent plasma drug concentrations, patients should be instructed to always take their medication with meals.

Distribution

Mifepristone is highly bound to alpha-1-acid glycoprotein (AAG) and approaches saturation at doses of 100 mg (2.5 μM) or more. Mifepristone and its metabolites also bind to albumin and are distributed to other tissues, including the central nervous system (CNS). As determined in vitro by equilibrium dialysis, binding of mifepristone and its three active metabolites to human plasma proteins was concentration-dependent. Binding was approximately 99.2% for mifepristone, and ranged from 96.1 to 98.9% for the three active metabolites at clinically relevant concentrations.

Metabolism

Cytochrome P450 3A4 (CYP3A4) has been shown to be involved in mifepristone metabolism in human liver microsomes. Two of the known active metabolites are the product of demethylation (one monodemethylated and one di-demethylated), while a third active metabolite results from hydroxylation (monohydroxylated).

Elimination and Excretion

Excretion is primarily (approximately 90%) via the fecal route.

Specific Populations

Renal Impairment

The pharmacokinetics of mifepristone in subjects with severe renal impairment (creatinine clearance [CrCL] < 30 mL/min, but not on dialysis) was evaluated following multiple doses of 1200 mg KORLYM for 7 days. Mean exposure to mifepristone increased 31%, with similar or smaller increases in metabolite exposure as compared to subjects with normal renal function (CrCL ≥ 90 mL/min). There was large variability in the exposure of mifepristone

and its metabolites in subjects with severe renal impairment as compared to subjects with normal renal function (geometric least square mean ratio [CI] for AUC of mifepristone: 1.21 [0.71-2.06]; metabolite 1: 1.43 [0.84-2.44]; metabolite 2: 1.18 [0.64-2.17] and metabolite 3: 1.19 [0.71-1.99]). No change in the initial dose of KORLYM is needed for renal impairment; the maximum dose should not exceed 600 mg per day.

Hepatic Impairment

The pharmacokinetics of mifepristone in subjects with moderate hepatic impairment (Child-Pugh Class B) was evaluated in a single- and multiple-dose study (600 mg for 7 days). The pharmacokinetics in subjects with moderate hepatic impairment was similar to those with normal hepatic function. There was large variability in the exposure of mifepristone and its metabolites in subjects with moderate hepatic impairment as compared to subjects with normal hepatic function (geometric least square mean ratio [CI] for AUC of mifepristone: 1.02 [0.59-1.76]; metabolite 1: 0.95 [0.52-1.71]; metabolite 2: 1.37 [0.71-2.62] and metabolite 3: 0.62 [0.33-1.16]). Due to limited information on safety in patients with mild-to-moderate hepatic impairment, the maximum dose should not exceed 600 mg per day. The pharmacokinetics of mifepristone in patients with severe hepatic disease has not been studied. KORLYM is not recommended in patients with severe hepatic disease.

Drug-Drug Interactions

In Vitro Assessment of Drug Interactions

In vitro studies indicate a potential for CYP-mediated drug interactions by mifepristone and/or its metabolites with substrates of CYP2A6, CYP2C8/2C9, CYP2C19, CYP3A4, CYP1A2, CYP2B6, CYP2D6, and CYP2E1. In vitro studies also indicated an interaction potential for drug transport mediated by P-glycoprotein (P-gp) and breast cancer resistance protein (BCRP). In vitro studies indicate mifepristone metabolism is mediated by CYP3A, and that mifepristone also inhibits and induces CYP3A.

In Vivo Assessment of Drug Interactions (see Table 3)

Table 3. Summary Table of KORLYM Drug-Drug Interaction Effects

Dosing of Mifepristone	Coadministered Drug	Dosing of Coadministered Drug	Geometric Mean Ratio (analyte ratio with/without drug coadministration)		
			Analyte	AUC	C _{max}
Effect of KORLYM on Coadministered Drug					
Contraindicated with mifepristone [See Contraindications (4)]					
1200 mg once daily for 10 days	simvastatin ¹	80 mg single dose	simvastatin acid	15.70	18.20
			simvastatin	10.40	7.02
Use lowest dose of coadministered drug, based on clinical experience and/or use of therapeutic drug monitoring					
1200 mg once daily for 10 days	alprazolam ²	1 mg single dose	alprazolam	1.80	0.81
			4-hydroxy-alprazolam	0.76	0.39
1200 mg once daily for 7 days	fluvastatin ³	40 mg single dose	fluvastatin	3.57	1.76
1200 mg once daily for 10 days	digoxin ⁴	0.125 mg once daily	digoxin	1.40	1.64
Effect of Coadministered Drug on KORLYM					
Dose adjustment required					
600 mg once daily for 17 days	ketoconazole	200 mg bid on days 13-17	mifepristone	1.38	1.28
			Metabolite 1 ¹	1.02	1.06
			Metabolite 2 ¹	1.67	1.69
			Metabolite 3 ¹	0.95	0.96
900 mg once daily for 14 days	itraconazole	200 mg daily for 14 days	mifepristone	1.10	1.20
			Metabolite 1 ¹	1.04	1.00
			Metabolite 2 ¹	1.23	1.19
			Metabolite 3 ¹	0.97	0.94
Effect of Coadministered Drug on KORLYM					
No dosing adjustment required					
300 mg once daily for 14 days	cimetidine ⁵	800 mg once daily	mifepristone	0.85*	0.75

*No effect = 90% CI within range 0.80 – 1.25

¹See Section 12.2 for the relative potencies of the three metabolites

²Simvastatin 40 mg dose used as reference for the comparison. Result could be representative of other oral drugs with CYP3A metabolism and high first pass effect: cyclosporine, midazolam, triazolam, pimozone, sildenafil, sirolimus, and tacrolimus

³Result could be representative of other oral drugs with CYP3A metabolism and low first pass effect. Clinical significance of any interaction will depend on the therapeutic margin of the drug.

⁴Result could be representative of other oral drugs with CYP2C8/C9 metabolism

⁵Plasma digoxin concentration should be measured after 1 to 2 weeks of concomitant use and following usual clinical practice at appropriate intervals thereafter.

⁶Result could be representative of other mild inhibitors of CYP3A

13 NONCLINICAL TOXICOLOGY

13.1 Carcinogenesis, Mutagenesis, Impairment of Fertility

Mifepristone was evaluated for carcinogenicity potential in rats and mice. Rats were dosed for up to two years at doses of 5, 25, and 125 mg/kg of mifepristone. The high dose was the maximum tolerated dose, but exposure at all doses was below exposure at the maximum clinical dose based on AUC comparison. Female rats had a statistically significant increase in follicular cell adenomas/carcinomas and liver adenomas. It is plausible that these tumors are due to drug-induced enzyme metabolism, a mechanism not considered clinically relevant, but studies confirming this

mechanism were not conducted with mifepristone. Mice were also tested for up to 2 years at mifepristone doses up to the maximum tolerated dose of 125 mg/kg, which provided exposure below the maximum clinical dose based on AUC. No drug-related tumors were seen in mice.

Mifepristone was not genotoxic in a battery of bacterial, yeast, and mammalian in vitro assays, and an in vivo micronucleus study in mice.

The pharmacological activity of mifepristone disrupts the estrus cycle of adult rats at a dose of 0.3 mg/kg (less than human exposure at the maximum clinical dose, based on body surface area). However, following withdrawal of treatment and subsequent resumption of the estrus cycle, there was no effect on reproductive function when mated.

A single subcutaneous dose of mifepristone (up to 100 mg/kg) to rats on the first day after birth did not adversely affect future reproductive function in males or females, although the onset of puberty was slightly premature in dosed females. Repeated doses of mifepristone (1 mg every other day) to neonatal rats resulted in potentially adverse fertility effects, including oviduct and ovary malformations in females, delayed male puberty, deficient male sexual behavior, reduced testicular size, and lowered ejaculation frequency.

14 CLINICAL STUDIES

14.1 Cushing's Syndrome

An uncontrolled, open-label, 24-week, multicenter clinical study was conducted to evaluate the safety and efficacy of KORLYM in the treatment of endogenous Cushing's syndrome. The study enrolled 50 subjects with clinical and biochemical evidence of hypercortisolemia despite prior surgical treatment and radiotherapy. The reasons for medical treatment were failed surgery, recurrence of disease, and poor medical candidate for surgery. Forty-three patients (86%) had Cushing's disease, four patients (8%) had ectopic ACTH secretion, and three (6%) had adrenal carcinoma. Baseline characteristics included: mean age of 45 years (range 26 to 71), mean BMI of 36 kg/m² (range 24 to 66), mean weight 100 kg (range 61 to 199), and mean waist circumference was 119 cm (range 89 to 178); 70% were female; 84% were white and 16% were black or African American. Baseline mean urinary free cortisol level was 365 µg per 24 hr. Patients belonged to one of two cohorts: a "diabetes" cohort (29 patients, 26 with type 2 diabetes and 3 with glucose intolerance), and a "hypertension" cohort (21 patients). Efficacy was evaluated separately in the two cohorts. KORLYM treatment was started in all patients at a dose of 300 mg once a day. The study protocol allowed an increase in dose to 600 mg after 2 weeks, and then by additional 300 mg increments every 4 weeks to a maximum of 900 mg per day for patients <60 kg, or 1200 mg per day for patients >60 kg, based on clinical tolerance and clinical response.

Results in the diabetes cohort

Patients in the diabetes cohort underwent standard oral glucose tolerance tests at baseline and periodically during the clinical study. Anti-diabetic medications were allowed but had to be kept stable during the trial and patients had to be on stable anti-diabetic regimens prior to enrollment. The primary efficacy analysis for the diabetes cohort was an analysis of responders. A responder was defined as a patient who had a ≥25% reduction from baseline in glucose AUC. The primary efficacy analysis was conducted in the modified intent-to-treat population (n=25) defined as all patients who received a minimum of 30 days on KORLYM. Fifteen of 25 patients (60%) were treatment responders (95% CI: 39%, 78%).

Mean HbA1c was 7.4% in the 24 patients with HbA1c values at baseline and Week 24. For these 24 patients mean reduction in HbA1c was 1.1% (95% CI -1.6, -0.7) from baseline to the end of the trial. Fourteen of 24 patients had above normal HbA1c levels at baseline, ranging between 6.7% and 10.4%; all of these patients had reductions in HbA1c by the end of the study (range -0.4 to -4.4%) and eight of 14 patients (57%) normalized HbA1c levels at trial end. Antidiabetic medications were reduced in 7 of the 15 DM subjects taking antidiabetic medication and remained constant in the others.

Results in the hypertension cohort

There were no changes in mean systolic and diastolic blood pressures at the end of the trial relative to baseline in the modified intent-to-treat population (n=21).

Signs and symptoms of Cushing's syndrome in both cohorts

Individual patients showed varying degrees of improvement in Cushing's syndrome manifestations such as cushingoid appearance, acne, hirsutism, striae, psychiatric symptoms, and excess total body weight. Because of the variability in clinical presentation and variability of response in this open label trial, it is uncertain whether these changes could be ascribed to the effects of KORLYM.

16 HOW SUPPLIED/STORAGE AND HANDLING

KORLYM is supplied as a light yellow to yellow, film-coated, oval-shaped tablet debossed with "Corcept" on one side and "300" on the other. Each tablet contains 300 mg of mifepristone. KORLYM tablets are available in bottles of 28 tablets (NDC 76346-073-01) and bottles of 280 tablets (NDC 76346-073-02).

Store at controlled room temperature, 25 °C (77 °F); excursions permitted to 15 to 30 °C (59 – 86 °F). [See USP Controlled Room Temperature]

17 PATIENT COUNSELING INFORMATION

As a part of patient counseling, doctors must review the KORLYM Medication Guide with every patient.

17.1 Importance of Preventing Pregnancy

- Advise patients that KORLYM will cause termination of pregnancy. KORLYM is contraindicated in pregnant patients.
- KORLYM reduces the effectiveness of hormonal contraceptives. Counsel females of reproductive potential regarding pregnancy prevention and planning with a non-hormonal contraceptive prior to use of KORLYM and up to one month after the end of treatment.
- Instruct patients to contact their physician immediately if they suspect or confirm they are pregnant.

Medication Guide
KORLYM® (KOR-Lim)
(mifepristone) tablets

What is the most important information I should know about KORLYM?

KORLYM can cause serious side effects, including:

- **Loss of a pregnancy.** Women who can become pregnant must:
 - have a negative pregnancy test before starting KORLYM
 - have a negative pregnancy test before restarting KORLYM if you stop taking it for more than 14 days
 - use a non-hormonal form of birth control while taking KORLYM and for 1 month after stopping KORLYM. Talk to your doctor about how to prevent pregnancy. Tell your doctor right away if you think you may be pregnant.

What is KORLYM?

KORLYM is a prescription medicine used to treat high blood sugar (hyperglycemia) caused by high cortisol levels in the blood (hypercortisolism) in adults with endogenous Cushing's syndrome who have type 2 diabetes mellitus or glucose intolerance and have failed surgery or cannot have surgery.

KORLYM is not for people who have type 2 diabetes mellitus not caused by Cushing's syndrome.

It is not known if KORLYM is safe and effective in children.

Do not take KORLYM if you:

- **are pregnant.** See "What is the most important information I should know about KORLYM?"
- **are taking:**
 - simvastatin (Zocor®, Vytorin®, Simcor®)
 - lovastatin (Mevacor®, Altoprev®, Advicor®)
 - cyclosporine (Gengraf®, Neoral®, Restasis®, Sandimmune®)
 - dihydroergotamine (Migranal®)
 - ergotamine (Ergomar®, Migergot®)
 - fentanyl (Abstral®, Actiq®, Duragesic®, Fentora®, Lazanda®, Onsolis®, Sublimaze Preservative Free®, Subsys®)
 - pimozone (Orap®)
 - quinidine (Nuedexta®)
 - sirolimus (Rapamune®, Torisel®)
 - tacrolimus (Prograf®, Protopic®)
- must take corticosteroid medicines for other serious medical problems
- are a woman who still has her uterus (womb) **and** have:
 - unexplained bleeding from your vagina
 - changes in the cells lining your uterus (endometrial hyperplasia) or cancer of the lining of your uterus (endometrial cancer)
- are allergic to mifepristone or any of the ingredients in KORLYM. See the end of this Medication Guide for a complete list of ingredients in KORLYM.

Talk to your doctor before taking KORLYM if you have any of these conditions.

What should I tell my doctor before taking KORLYM?

Before taking KORLYM, tell your doctor if you:

- are pregnant or plan to become pregnant
- have low potassium in your blood (hypokalemia)
- have or have had a bleeding problem or are taking medicines to thin your blood
- have or have had heart problems
- have had an organ transplant
- have been taking medicines called corticosteroids (cortisone, dexamethasone, methylprednisolone, prednisolone, prednisone)
- are breastfeeding or plan to breastfeed.

Tell your doctor about all of the medicines you take, including prescription and nonprescription medicines, vitamins and herbal supplements.

Using **KORLYM** with certain other medicines can affect each other. Using KORLYM with other medicines can cause serious side effects.

Especially tell your doctor if you take:

- medicines to treat:
 - fungal infections (such as ketoconazole)
 - depression
 - HIV infection
 - Hepatitis C infection
 - certain bacterial infections
 - high blood pressure
- steroid medicines such as prednisone
- thyroid hormones

Ask your doctor or pharmacist for a list of these medicines if you are not sure. Know the medicines you take. Keep a list of them to show to your doctor and pharmacist.

How should I take KORLYM?

- Take KORLYM exactly as your doctor tells you.
- Your doctor may change your dose if needed.
- KORLYM is usually taken 1 time each day.
- Take KORLYM with food.
- Swallow KORLYM whole. **Do not** split, crush or chew KORLYM tablets. If you cannot swallow KORLYM tablets whole, tell your doctor.

What should I avoid while taking KORLYM?

You should not drink grapefruit juice while you take KORLYM. Grapefruit juice may increase the amount of KORLYM in your blood and increase your chance of having side effects.

What are the possible side effects of KORLYM?

KORLYM can cause serious side effects including:

• See “What is the most important information I should know about KORLYM?”

• **loss of pregnancy**

• **reduced effects of adrenal hormones (adrenal insufficiency).** KORLYM stops an adrenal hormone in your body called cortisol from working. Tell your doctor right away if you have any symptoms of adrenal insufficiency. Symptoms may include:

- unusual tiredness or weakness
- nausea
- fatigue
- low blood pressure (hypotension)
- low blood sugar (hypoglycemia)

• **low blood potassium (hypokalemia).** Your doctor should check the level of potassium in your blood before you start taking KORLYM and while you take it. Tell your doctor if you have any signs of low potassium. Signs may include:

- muscle weakness, aches, or cramps
- abnormal or irregular heartbeats (palpitations)

• **bleeding from the vagina.** KORLYM may cause the lining of your uterus to become thick and may cause your uterus to bleed. Tell your doctor right away about any bleeding from your vagina that is not normal for you.

• **disruption of menstrual cycle**

• **problems with the electrical system of your heart (QT interval prolongation).**

• **worsening of symptoms of other medical problems that are treated with corticosteroids when you take corticosteroids and KORLYM at the same time.**

The most common side effects of **KORLYM** include:

- | | |
|--|-------------------------------|
| • nausea | • fatigue |
| • headache | • low potassium in your blood |
| • pain in your arms and legs (arthralgia) | • vomiting |
| • swelling of your arms and legs (peripheral edema) | • high blood pressure |
| • dizziness | • decreased appetite |
| • thickening of the lining of the uterus (endometrial hypertrophy) | |

Tell your doctor if you have any side effect that bothers you or that does not go away.

These are not all the possible side effects of KORLYM.

Call your doctor for medical advice about side effects. You may report side effects to FDA at 1-800-FDA-1088.

How should I store KORLYM?

Store KORLYM at room temperature, between 68°F to 77°F (20°C to 25°C).

Keep KORLYM and all medicines out of the reach of children.

General information about the safe and effective use of KORLYM

Medicines are sometimes prescribed for purposes other than those listed in a Medication Guide.

Do not use KORLYM for a condition for which it was not prescribed. Do not give KORLYM to other people, even if they have the same symptoms you have. It may harm them. You can ask your pharmacist or healthcare provider for information about KORLYM that is written for healthcare professionals.

What are the ingredients in KORLYM?

Active ingredient: mifepristone

Inactive ingredients: silicified microcrystalline cellulose, sodium starch glycolate, hydroxypropylcellulose, sodium lauryl sulfate, magnesium stearate, hypromellose, titanium dioxide, triacetin, D&C yellow 10 aluminum lake, polysorbate 80, and FD&C yellow 6 aluminum lake.

Manufactured for: Corcept Therapeutics Incorporated, Menlo Park, CA 94025

KORLYM® is a registered trademark of Corcept Therapeutics Incorporated.

©2019 Corcept Therapeutics Incorporated. All rights reserved.

K-00017 NOV 2019

For more information, go to www.korlym.com or www.corcept.com or call 1-855-456-7596.

This Medication Guide has been approved by the U.S. Food and Drug Administration

Revised: 11/2019